



INSTRUCTION BULLETIN

No. 340469
Machine: 800/810
Published: 2-01/00
System: SWEEPING

NOTE: DO NOT DISCARD the Parts List from the Instruction Bulletin. Place the Parts List in the appropriate place in your machine manual for future reference. Retaining the Parts List will make it easier to reorder individual parts and will save you the cost of ordering an entire kit.

NOTE: Numbers in parenthesis () are reference numbers for parts listed in Bill of Materials.

Installation instructions for kit number 375416

SYNOPSIS / PROBLEM:

This kit contains the parts needed to replace the side brush lift roller kit on the model 800/810 sweepers.

Please follow step-by-step instructions.

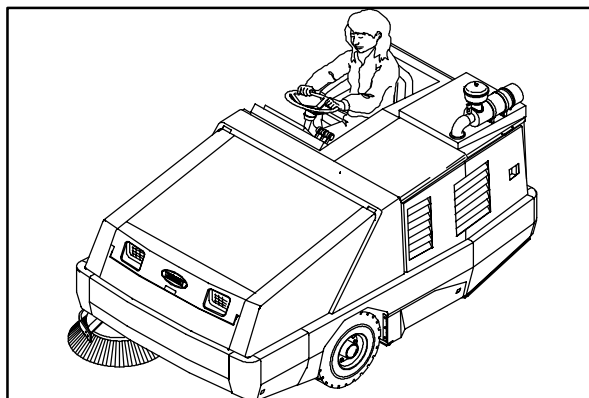
SPECIAL TOOLS / CONSIDERATIONS: NONE

(Estimated time to complete: 2 hours)

PREPARATION:

(Refer to FIG. 1)

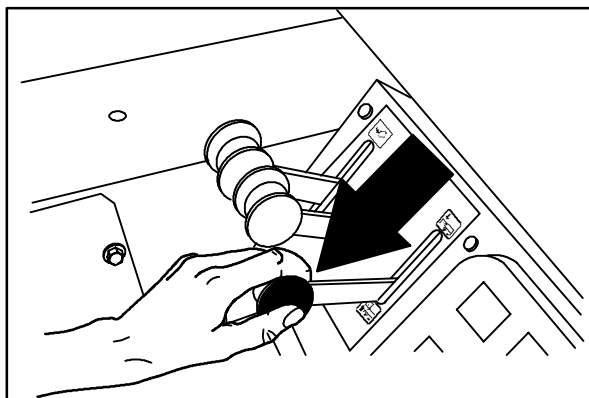
1. Slowly drive the machine to a clean work area.



2. Pull and hold the hopper lift lever in the **Up** position and raise the hopper all the way up.

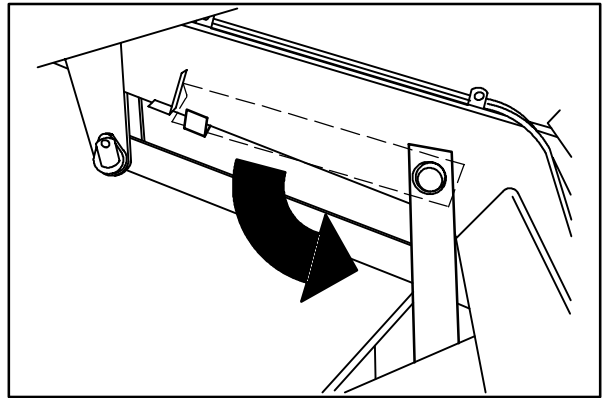
FOR SAFETY: When using machine, make sure adequate clearance is available before raising hopper.

NOTE: Be aware that the minimum ceiling height needed to high dump the hopper is 3355 mm (11 ft.).



3. Remove the support bar from the storage clip.

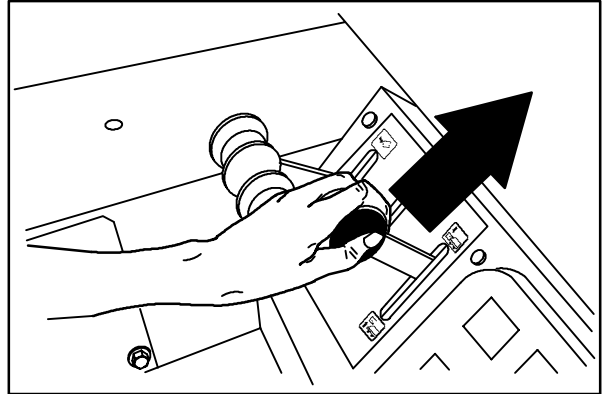
WARNING: Raised hopper may fall. Engage hopper support bar.



08589

4. Slowly lower the hopper so the support bar rests on the bar stop on the machine frame.

WARNING: Lift arm pinch point. Stay clear of hopper lift arms.



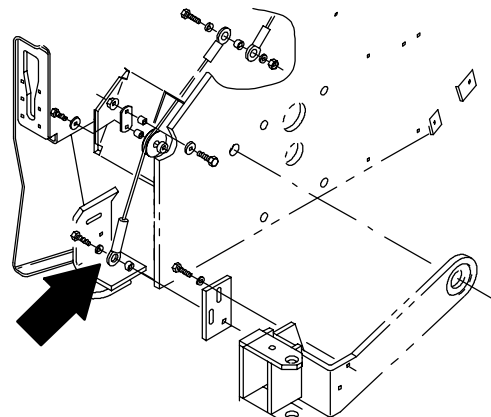
08482

5. Shut the engine off.

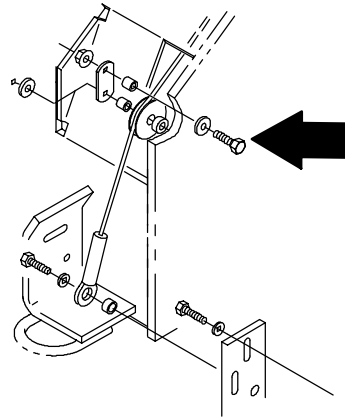
FOR SAFETY: Before leaving or servicing machine, stop on level surface and set parking brake. Then turn off machine and remove key.



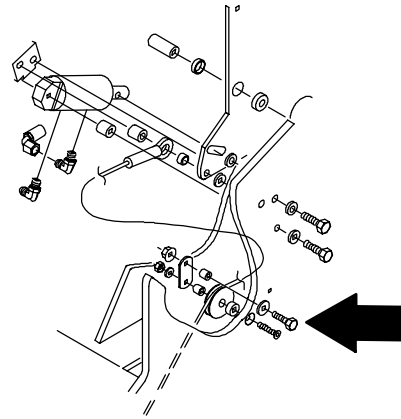
6. Locate and disconnect the lower end of the side brush lift cable from the side brush arm. Set the mounting hardware aside.



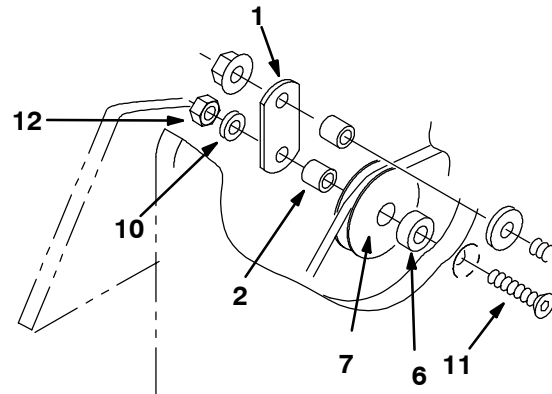
7. Disconnect and remove the lower roller assembly from the machine and lift cable. Discard the old roller assembly.



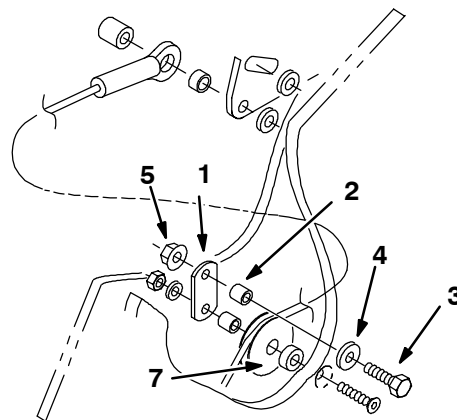
8. Disconnect and remove the upper roller assembly from the machine and lift cable. Discard the old roller assembly.



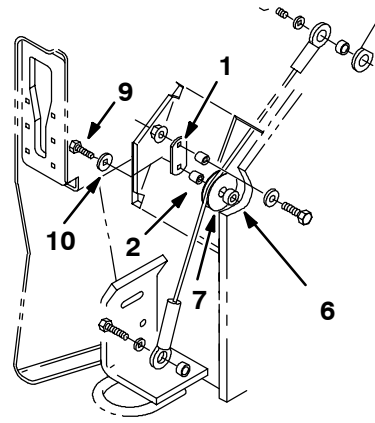
9. Mount the new roller (7) to the upper roller assembly location with a hex screw (11), tube (6), sleeve (2), roller plate (1), a flat washer (10) and lock nut (12).



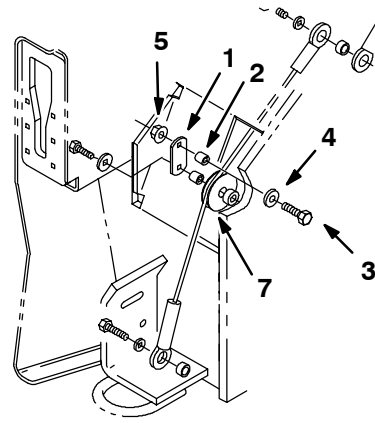
10. Route the lift cable over the new roller (7), and secure in place with hex screw (3), washer (4), sleeve (2) and a hex nut (5).



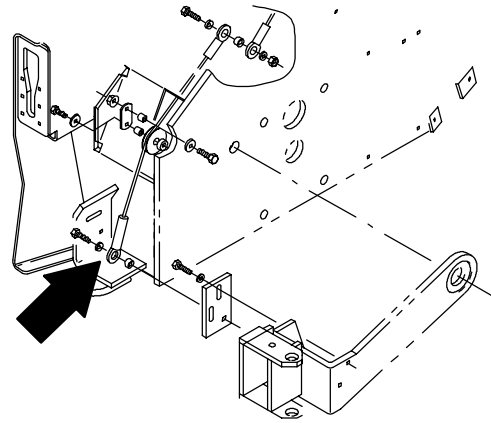
11. Mount the new roller to the lower roller assembly location with a hex screw (9), washer (10), roller plate (1), sleeve (2) and a tube (6).



12. Route the lift cable over the new roller (7), and secure in place with hex screw (3), washer (4), sleeve (2) and a hex nut (5).



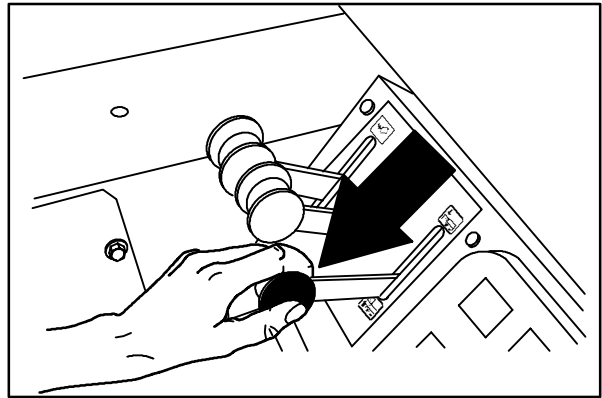
13. Reconnect the lower end of the side brush lift cable to the side brush arm. Tighten all new roller assembly mounting hardware.



14. Start the engine.



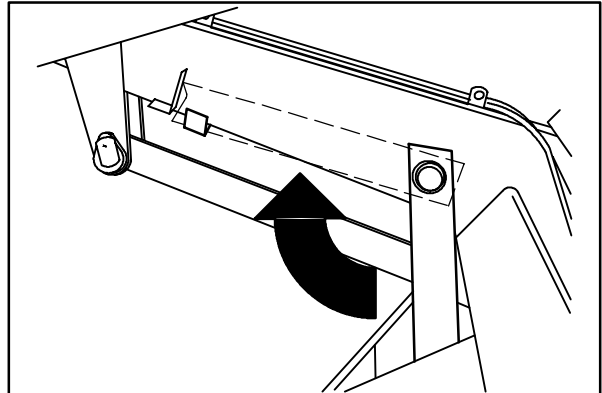
15. Raise the hopper slightly to release the hopper support bar.



08480

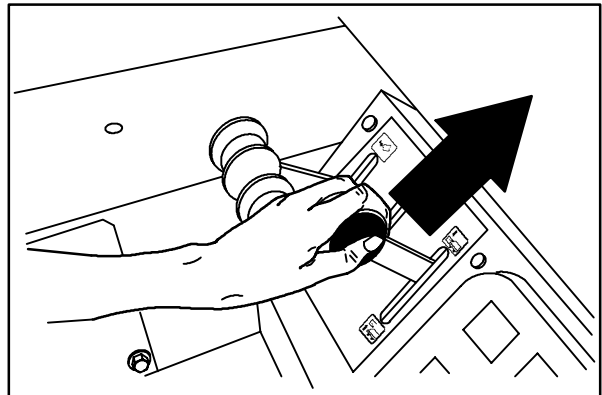
16. Put the hopper support bar in the storage clip.

⚠ WARNING: Lift arm pinch point.
Stay clear of hopper lift arms.



08590

17. Lower the hopper. Check the side brush lift cable for proper operation



08482

18. Shut the engine off.



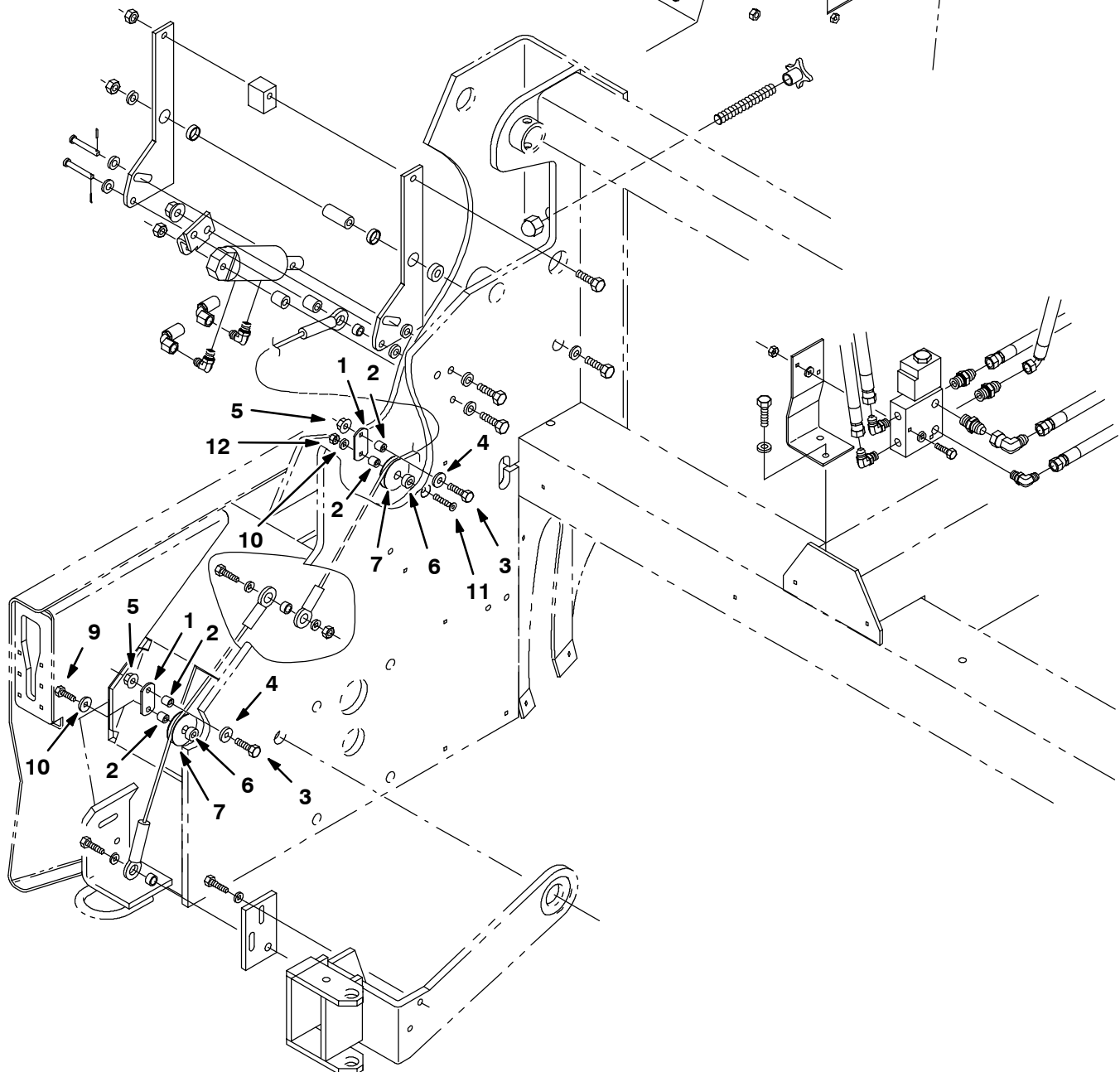
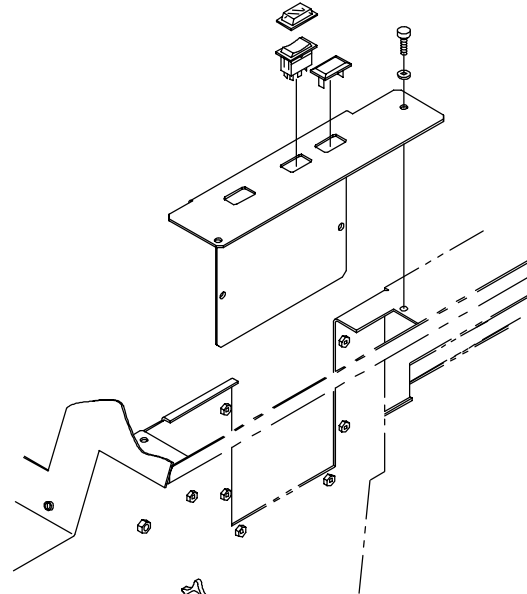
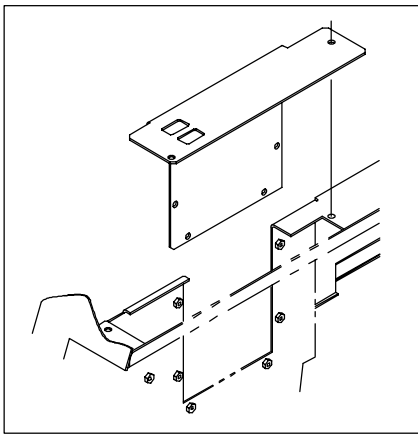


FIG. 1 - Side Brush Lift Roller Kit

BILL OF MATERIALS FOR SIDE BRUSH LIFT ROLLER KIT 375416

Ref.	TENNANT Part No.	Description	Qty.
1	375415	Plate, side brush, roller	2
2	80395	Sleeve, 0.50D 0.32B 0.65LSs	4
3	76570	Screw, hex, M08 X 1.25 X 30, 8.8	2
4	32492	Washer, flt, 0.38 STD	2
5	07791	Nut, hex, flng, M08 X 1.25	2
6	73737	Tube, 0.75D 0.38B 0.3L STL	2
7	74391	Pulley assy, cable, 2.0D 0.5B	4
8	32491	Washer, flt, 0.31 STD	4
9	41342	Screw, hex, M08 X 1.25 X 40, 8.8	2
10	33924	Washer, flat, M10, 10.5 X 21 X 2Ss	2
11	09028	Screw, hex, M10 X 1.5 X 25, Ss	1
12	32715	Nut, hex, lock, M10 X 1.5, Ss	1

TENNANT COMPANY
P. O. Box 1452
Minneapolis, MN 55440-1452